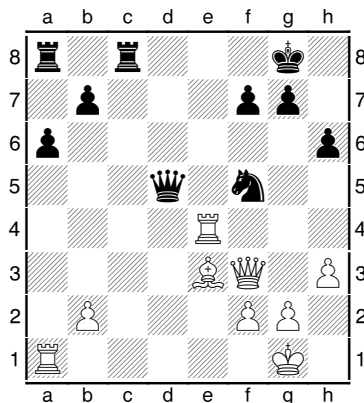


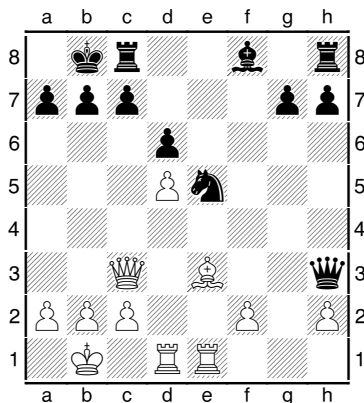
# Odtážné napadení se šachem

Použijte odtážné napadení se šachem k zisku materiálu.

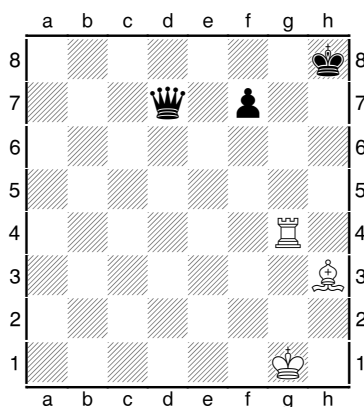
1) Bílý na tahu



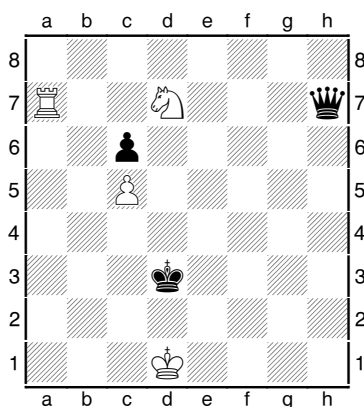
2) Bílý na tahu



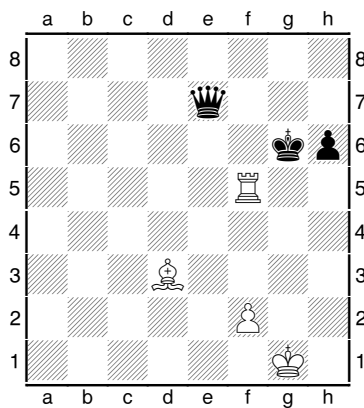
3) Bílý na tahu



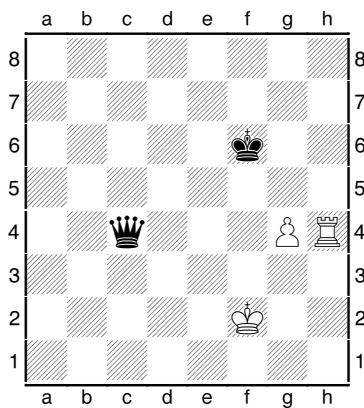
4) Bílý na tahu



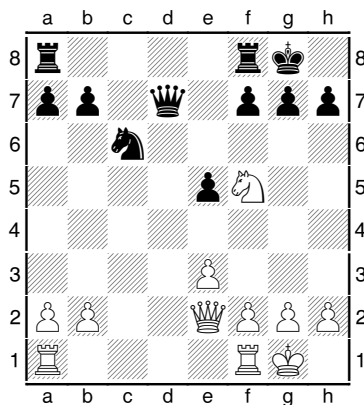
5) Bílý na tahu



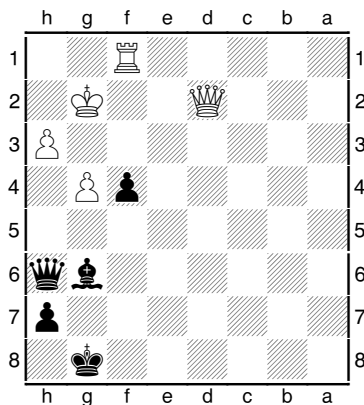
6) Bílý na tahu



7) Bílý na tahu

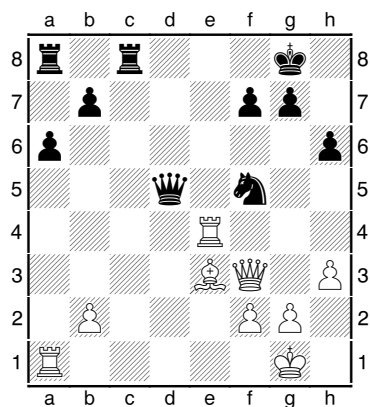


8) Černý na tahu



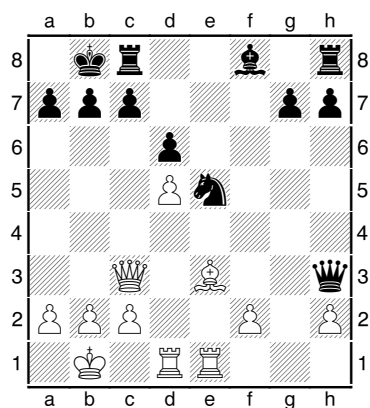
# Řešení

1) Bílý na tahu



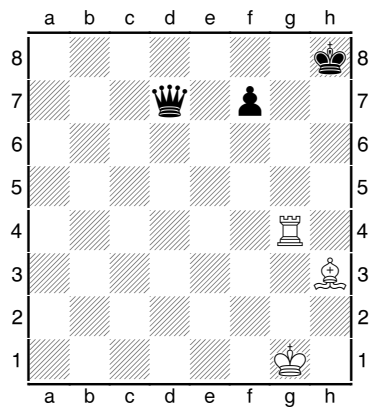
1. Ve8+ Vxe8 2. Dxd5

2) Bílý na tahu



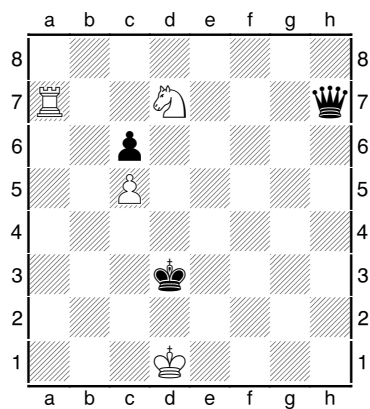
1. Sxa7 Kxa7 2. Dxb3

3) Bílý na tahu



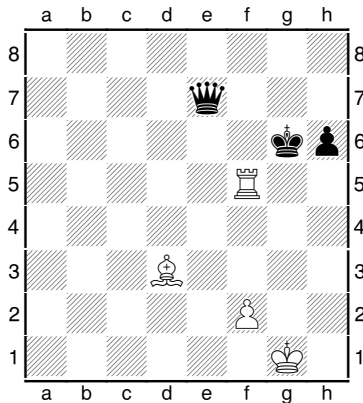
1. Vh4+ Kg7 2. Sxd7

4) Bílý na tahu



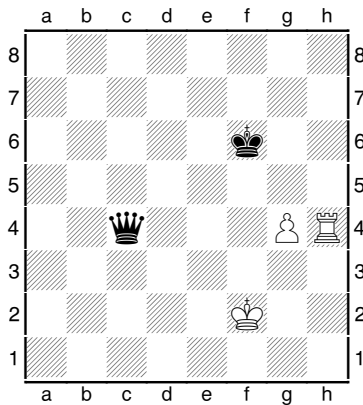
1. Je5+ Ke4 2. Vxh7

5) Bílý na tahu



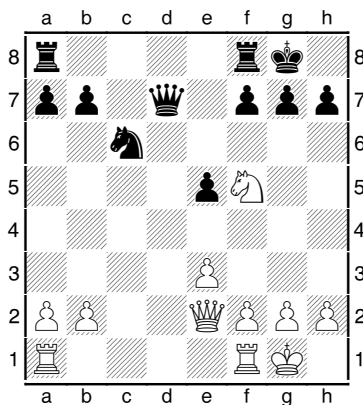
1. Ve5+ Kf6 2. Vxe7

6) Bílý na tahu



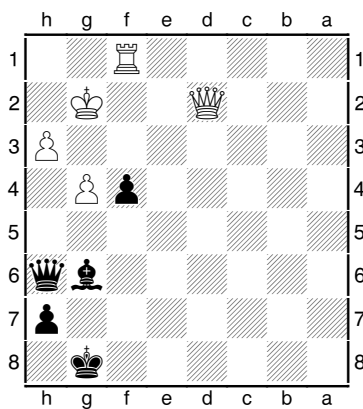
1. g5+ Kxg5 2. Vxc4

7) Bílý na tahu



1. Dg4, černý musí pokrýt hrozbu matu tahem 1. g6 nebo 1. ... f6. V obou případech následuje 2. Jh6+ a 3. Dxd7.

8) Černý na tahu



1. ... f3+ 2. Kxf3 Dxd2