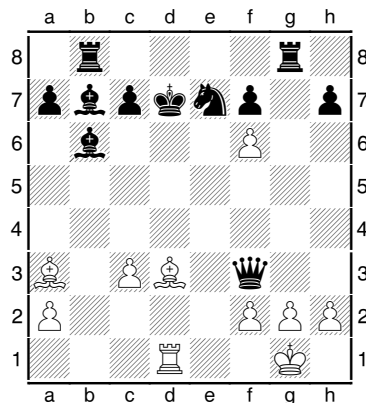


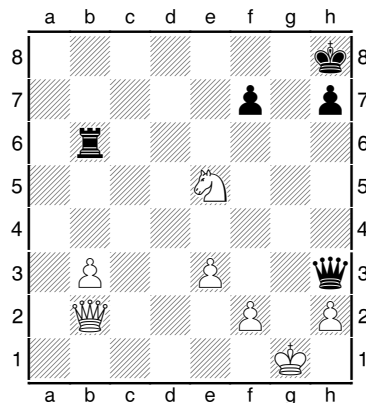
Dvojitý šach

V následujících diagramech využijte dvojitý šach k zisku materiálu nebo dejte mat.

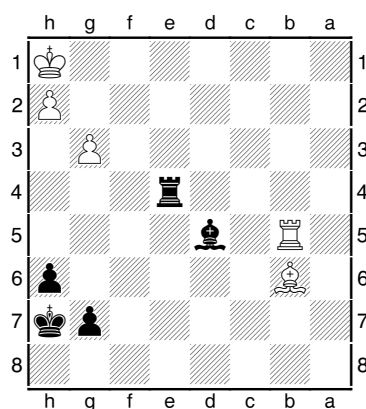
1) Bílý na tahu



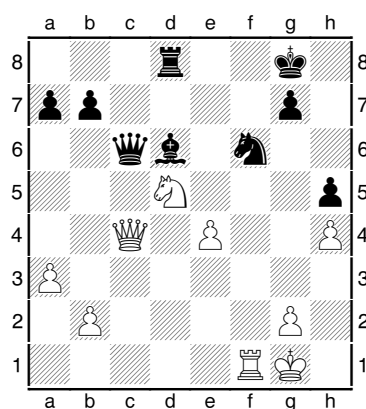
2) Bílý na tahu



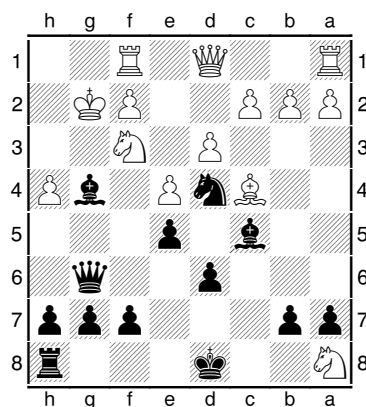
3) Černý na tahu



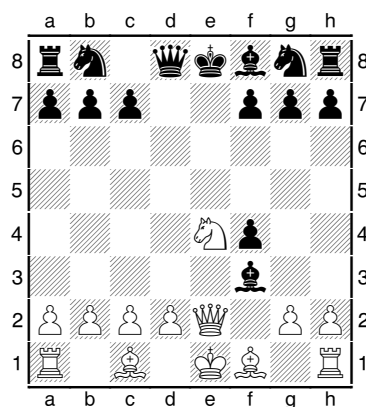
4) Bílý na tahu



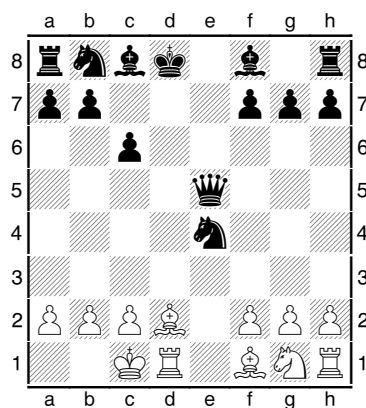
5) Černý na tahu



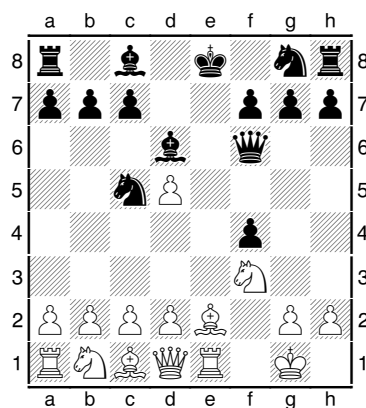
6) Bílý na tahu



7) Bílý na tahu

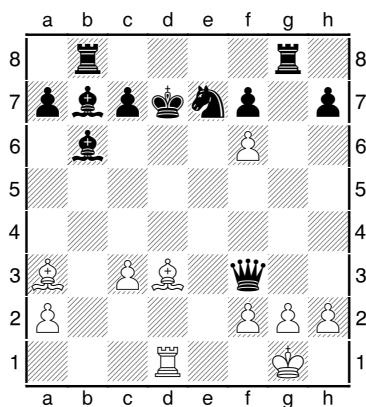


8) Bílý na tahu



Řešení

1) Bílý na tahu

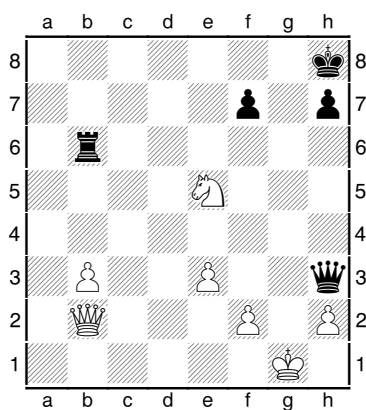


1. Sf5+ a teď

1. ... Kc6 2. Sd7 mat

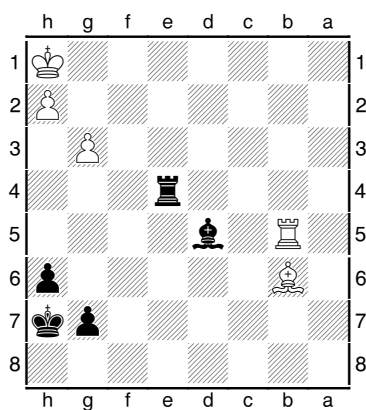
1. ... Ke8 2. Sd7+ Kf8 3. Sxe7 mat

2) Bílý na tahu



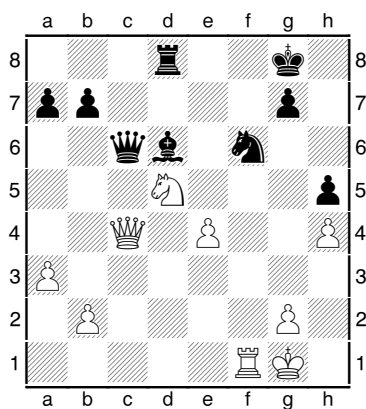
1. Jg6+ Kg8 2. Dh8 mat

3) Černý na tahu



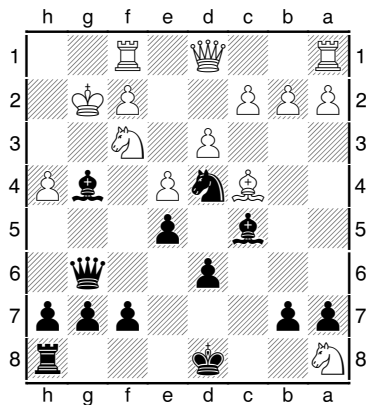
1. ... Ve1 mat

4) Bílý na tahu



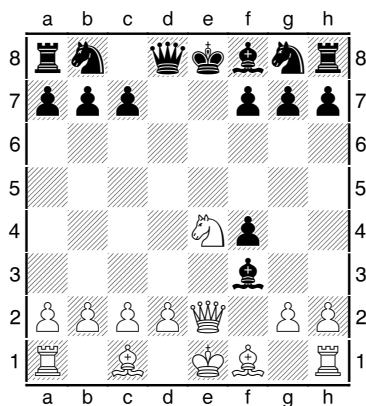
1. Je7+ a po ústupu krále následuje Jxc6 a bílý stojí na výhru.

5) Černý na tahu



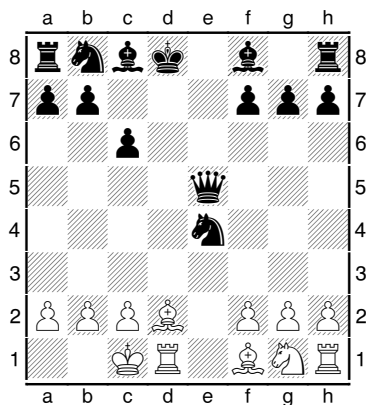
1. ... Sxf3+ a následuje Dg2 mat.

6) Bílý na tahu



1. Jf6 mat

7) Bílý na tahu

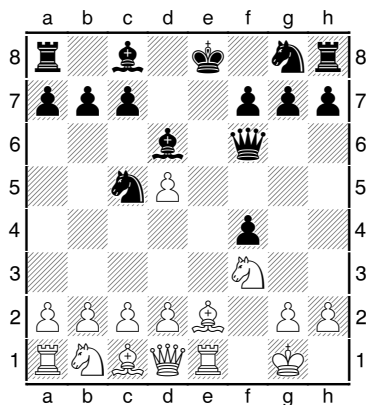


1. Sg5+ a nyní podle ústupu krále:

1. ... Kc7 2. Sd8 mat

1. ... Ke8 2. Vd8 mat

8) Bílý na tahu



1. Sb5+ a ať král ustoupí na d8 nebo f8 následuje

2. Ve8 mat.